

# LASER VIBROMETER CODE 0030-LM15



reflective signal strength indicate

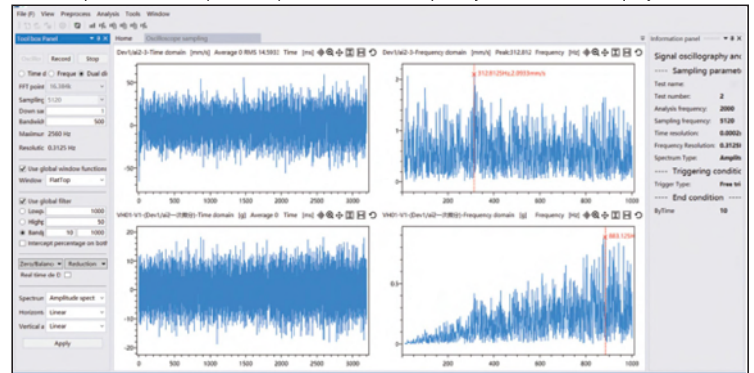
sensitivity setting

- Non-contact measurement, no additional mass influence
- All-in-one design, integrated optical and electrical systems
- Manual focusing
- Computer software is included



tripod (included)

computer software (included): time-domain, frequency-domain, dual-display mode



## SPECIFICATION

<b>Laser</b>		output<4mW, wavelength 632.8nm, class 3A laser product
<b>Working distance</b>		0.35mm~10m (depending on surface)
<b>Speed decoder</b>	<b>bandwidth</b>	DC~20kHz
	<b>range</b>	±50mm/s, ±500mm/s, ±5000mm/s (adjustable)
	<b>maximum speed resolution</b>	0.1µm/s/√Hz
<b>Maximum linearity error</b>		±1%
<b>Output voltage range</b>		±10V
<b>Output</b>	<b>digital signal</b>	ethernet port
	<b>analogue signal</b>	BNC port
<b>Low-pass filter</b>		500Hz, 2kHz, 20kHz
<b>Gear control and display</b>		7-inch colour touchscreen with interactive menu-guided setting
<b>Power supply</b>		power adapter
<b>Operation temperature</b>		5°C~45°C
<b>Storage temperature</b>		-10°C~65°C
<b>Dimension</b>		382×160×94mm
<b>Weight</b>		5.2kg

\*Maximum speed resolution is defined as the signal amplitude (RMS) measured at 10Hz with a signal-to-noise ratio of 0dB when a reflective film is applied at a distance of 2 meters

## STANDARD DELIVERY

<b>Main unit (including speed decoder)</b>	1 pc
<b>Tripod</b>	1 pc
<b>Power adapter</b>	1 pc
<b>Software</b>	1 pc

## OPTIONAL ACCESSORY

<b>Laptop computer</b>	0030-COMPUTER-E
------------------------	-----------------